



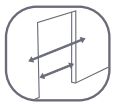
Your way to a safer home

## screw fit wooden stairgates

### Instructions for use



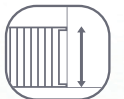
Fits top &  
bottom stairs



Fits inside &  
outside opening



76-105cm wide  
(30-41")



77cm high  
(30")



Includes  
skirting kit



Screw mount  
(to wood or plaster/  
brick walls)

**0-24**  
Months

Version 1, for gates where product codes begin with FRSW

Step by step video fitting guides at  
[www.fredsafety.co.uk](http://www.fredsafety.co.uk)



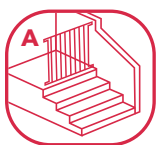
Exceeds  
safety standards

# IMPORTANT! READ AND FOLLOW THESE INSTRUCTIONS CAREFULLY AND KEEP FOR FUTURE REFERENCE

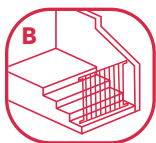
Please read the instructions thoroughly, failure to do so may result in damage to the gate or could in worst case cause injury to your child. When unpacking the gate, carefully check all parts.

## Safety Warnings

- This gate is designed and tested for children up to 24 months. However, this guidance should be constantly monitored against your child's own development. Individual children's skills develop at different ages and if your child can operate or climb the gate, it should not be used.
- **WARNING** - Incorrect installation can be dangerous.
- **WARNING** - Do not use the safety barrier if any components are damaged or missing.
- **WARNING** - The safety barrier must not be fitted across windows.
- Ensure that the wall, door frame or stairpost to which you are fitting the gate, is strong, rigid and free of dirt and grease.
- If the surface to which you are fixing your gate is not completely flat and vertical, fingertraps may be formed between the wall and the gate. Please use additional spacers when fitting the gate to eliminate them.
- For your child's safety, it is essential that a safety barrier is positioned correctly in relation to the stairs.



- To prevent the child from falling down the stairs, if the safety barrier is used at the top of the stairs, it should not be positioned below the top level, **fig. A**.



- To prevent the child from climbing the stairs, if the safety barrier is used at the bottom of the stairs, it should be positioned at the front of the lowest tread possible, **fig. B**.
- Keep these instructions and the tools provided for future reference and use.
- Once the gate is installed, read the instructions again and check the gate is correctly fitted and secure.

## Product information

- Fits openings from **76-105cm** (30-41") wide with the fittings supplied.
- This gate is for domestic indoor use only.
- This gate has a manual locking mechanism.
- When fitted as per these instructions, this safety gate conforms to: **EN1930:2011**.

## Everyday use

- Please note that this product will not necessarily prevent accidents from happening. Never leave your child unattended.
- Always check that the gate is correctly closed after passing through.
- Always keep the gate in a closed and locked position.
- Do not hang or tie toys to any part of this gate.
- Your gate only opens through 110°. Pushing/forcing it to open further can damage the hinges such that the gate no longer provides an effective safety barrier.
- Never allow your children to play or swing on the gate.
- Do not allow children, animals or adults to climb over the gate. They may fall and injure themselves, or damage the gate so that it can no longer provide an effective safety barrier.
- If the gate is damaged, or has been exposed to a large impact, it must not be used again.

## On-going checks

- Regularly check the gate to ensure that it is secure and functioning in accordance with these instructions.
- If additional or replacement parts are needed, only use those obtained through the manufacturer. Enquire online through [www.fredsafety.co.uk](http://www.fredsafety.co.uk)

## Other important information

Uncompromising on safety, only high performance materials are used in the manufacture of the Fred® range. The wood in this gate is engineered from Poplar taken from well managed, sustainable forests. The fittings are Anodized Aluminum together with top quality PA6, POM and PP plastics.

- **Guarantee:** Your Fred® Gate is guaranteed to be free from manufacturing defects for a period of 1 year from date of purchase under normal use and in compliance with these instructions. The guarantee extends only to the original retail purchaser and proof of purchase is required.
- **Product registration:** Please register your purchase at [www.fredsafety.co.uk/register](http://www.fredsafety.co.uk/register). By registering, we guarantee to contact you in the unlikely event that a safety notification is required. You can extend your guarantee for a further 3 months free of charge by registering your gate on our website.
- **Care instructions:** Wipe with a damp cloth. Do not immerse this product in water. Wipe with a soft, damp cloth. Do not immerse in water. Scratches and other surface damage is not covered by guarantee and should be avoided e.g. don't knock your gate with sharp or hard objects and train pets to keep away.

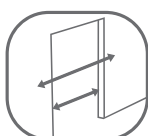
## Positioning your gate

Fit this gate at the top or bottom of stairs, or on the inside or outside of doorways or other openings. The gate can be fitted correctly when walls are straight across or at an angle to one another.

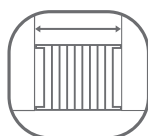
Ensure that the doorframe, stairpost, wall or other surface to which the gate is fitted is clean, strong and rigid. If fitting to stud walls or any other thin partition, it may be necessary to mount a wooden batten first. If in any doubt, please get expert advice.



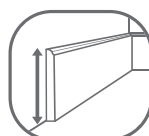
Fits top & bottom stairs



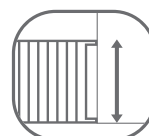
Fits inside & outside opening



76-105cm  
(30-41")



Fits over skirtings  
max 10.5cm  
(4.25")



77cm high  
(30")

## Before you start

### 1. Work out what your walls/sides of the opening are made of and gather your tools together:



Drill



2mm Wood Bit or 6mm Masonry Bit



Philips Screwdriver

#### When attaching to wood:

Drill **2mm** pilot holes at each of the 4 screw points.

#### When attaching to plastered or unplastered concrete or brick walls:

Drill holes at the 4 screw points with a **6mm** masonry bit and fill each with a Wall Plug (G).

#### When attaching to stud walls or other thin partitions:

Ensure that you screw into a stud behind the plasterwork and use an appropriate fixing system (not supplied). Get expert help if in any doubt.

**Important!** Before drilling, check for hidden pipes and cables using a detector.

### 2. If there is no flat surface, you may need:

We have tried to include all the fittings you need to install this Fred Safety Gate over typical sized skirtings and where the wall is slightly off-vertical without the need for accessories. However, not all houses are built the same, and occasionally the skirting may be an unusual size or the stairpost you need to fit the gate to is curved, with no flat surface against which your Fred Safety Gate can be mounted. For these situations, we have developed the following accessories to make it easier for you.

For more information please visit [www.fredsafety.co.uk](http://www.fredsafety.co.uk)

#### Fred® Universal Wall & Skirting Kit



Screws to your wall over your skirting board to provide a flat surface onto which any gate can be mounted.

When fitting this Fred Safety Gate, you will only need the kit if the skirting board is **11-14cm** (4.3-5.5") high or more than **22mm** (7/8") thick. For all other sizes of skirting, your gate comes with everything you need to mount it vertically against the wall.

#### Fred® Universal Stairpost Fitting Kit

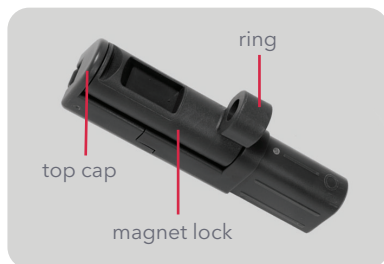


Straps directly to any shape of stairpost (newel post or baluster) to provide a flat surface against which any safety gate can be fitted. No screws required, so no damage to your staircase.



# What's included

Parts List Page 1



**(A)** 1 x Top Lock



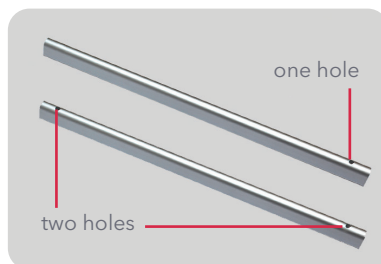
**(B)** 1 x Bottom Lock



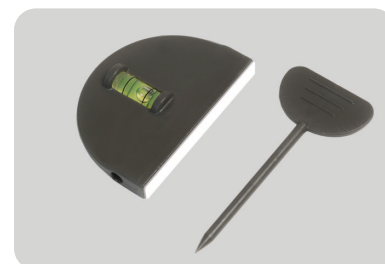
**(C)** 1 x Top Hinge



**(D)** 1 x Bottom Hinge

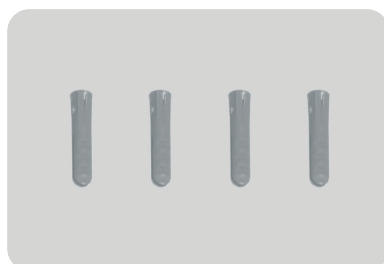


**(E1)** 1 x Fast Mount™ Locking Rail with one screw hole **(E2)** 1 x Fast Mount™ Hinge Rail with two screw holes

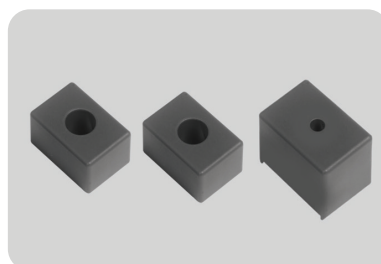


**(F1)** 1 x Spirit Level  
**(F2)** 1 x Marker Tool

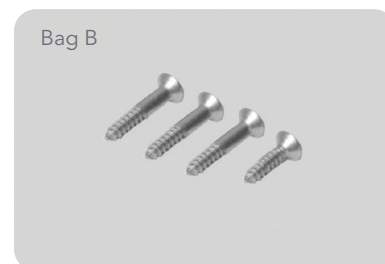
Marker Tool comes inserted within the Spirit Level



**(G)** 4 x Wall Plugs



**(H1)** 2 x Small Lower Spacer  
**(H2)** 1 x Large Lower Spacer



**(I)** 4 x Small Screws  
3 x 50mm and 1 x shorter screw



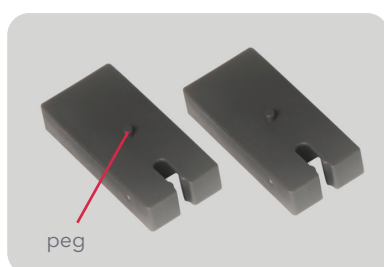
**(J)** 4 x Medium Screws  
3 x 70mm and 1 x shorter screw



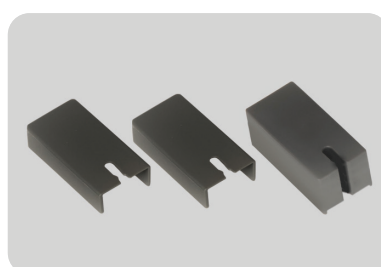
**(K)** 4 x Large Screws  
3 x 80mm and 1 x shorter screw



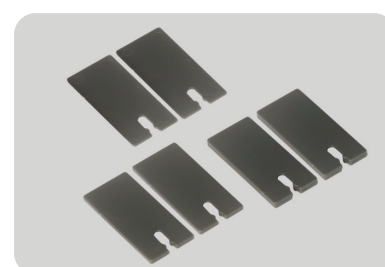
**(L)** 2 x Extra Long Screws  
1 x 100mm and 1 x shorter screw



**(M)** 2 x Inner Spacers



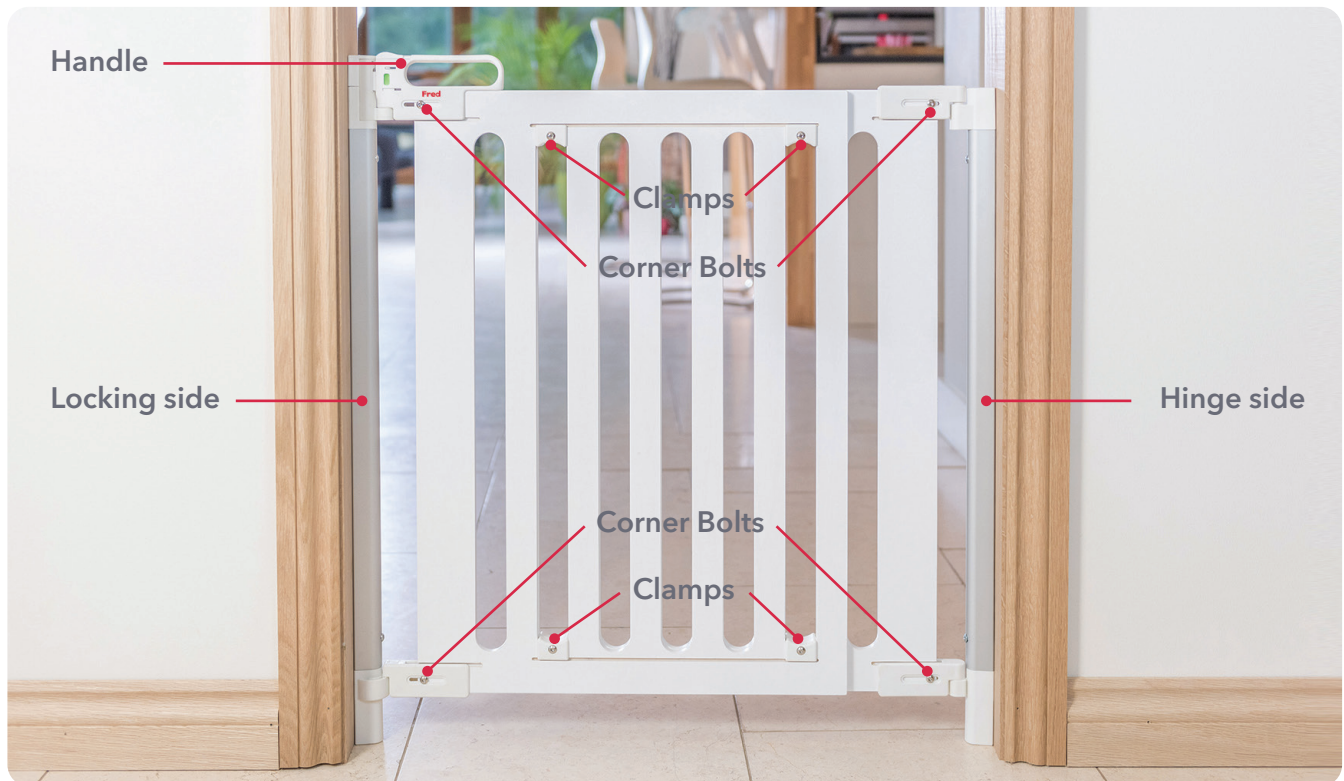
**(N1)** 2 x Small Outer Spacer Covers **(N2)** 1 x Large Outer Spacer Cover



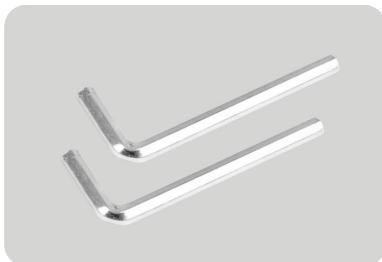
6 x Spacer Inserts  
**(O)** 2 x thin **(P)** 2 x medium  
**(Q)** 2 x thick

## What's included

## Parts List Continued



**(R)** 1 x Screw Fit Wooden Gate



**(S)** 2 x Allen Key



**(T)** 1 x Removal Tool



**(U1)** 1 x Left and 1 x Right One-Way Stopper **(U2)** 2 x Long Barrel Nut **(U3)** 1 x Screw

## Step by step installation guide



The Top and Bottom Locks are marked A and B on the back. Slide A into the end marked A, and B into the end marked B on the Fast Mount™ Locking Rail (E1) until they both snap into place. End A is the top of your Rail.



The Top and Bottom Hinges are marked C and D on the back. Slide C into the end marked C, and D into the end marked D on the Fast Mount™ Hinge Rail (E2) until they both snap into place. End C is the top of your Rail.

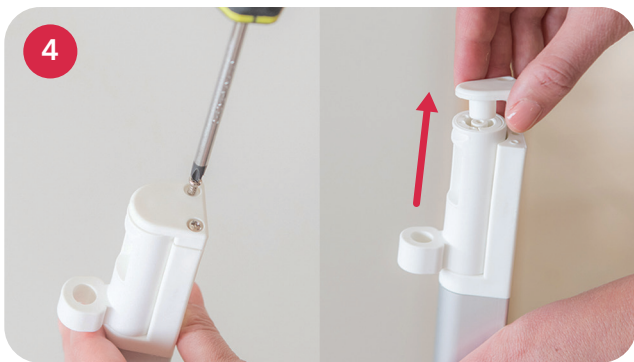
**Optional:** If you have wires, pipes or beading (max diameter 15mm) along the base of the wall



Insert a screwdriver into the small hole at the back of the Bottom Lock/Hinge, push hard both in and down.



Slide the curved section out of the Bottom Lock/Hinge.



Remove the two screws in the very top of the Locking Rail, then lift off the top cap and magnet lock.



Remove the backing tape from the Spirit Level (F1) and stick it lengthwise on the side of the Locking Rail towards the top.



Position the base of the Locking Rail on the floor where you wish to fit the gate, make the Rail vertical (the bubble inside the Spirit Level centred), and pass the Marker (F2) through the hole at the bottom of the Rail, to mark the drilling point. Move the Spirit Level, and repeat this step for the Hinge Rail.







Drill the lower fixing holes appropriate to the type of wall that you are fixing your Gate to - refer to **'Before you start'** on page 3.

If you are fixing to a brick or concrete wall, insert the Wall Plugs (G) into each hole.



Use the table below to decide whether you need to use Lower Spacers (H1 & H2) between the FastMount™ Rail and the wall. If you do need to use Lower Spacers, fit them between the Rail and the wall so that the Screws (I-L) pass through and hold them in place.

	Fitting inside an opening		Fitting outside an opening	
	No skirting board	With skirting board or wall sloping towards opening	No skirting board	With skirting board or wall sloping towards opening
<b>Bottom of Hinge Rail</b>	No Spacers required	<b>Small Lower Spacer (H1)</b> (If skirting is more than <b>14cm</b> high, no Spacer required)	No Spacers required	<b>Small Lower Spacer (H1)</b> (If skirting is more than <b>14cm</b> high, no Spacer required)
<b>Bottom of Locking Rail</b>	No Spacers required	<b>Small Lower Spacer (H1)</b> (If skirting is more than <b>14cm</b> high, no Spacer required)	<b>Large Lower Spacer (H2)</b>	<b>Small and Large Lower Spacer (H1 &amp; H2)</b>
				



Choose the correct size Screws (I-L). Pass a Screw through the lower hole in the Rail and any Lower Spacer(s) required.

**If fitting to wood:**

The Screw will need to protrude by **15mm**.

**If fitting to plaster-covered brick or concrete:**

The Screw will need to protrude by **35mm**.

Smaller screws will be needed where no spacers are used, larger ones as spacers are added. The smaller fully serrated screw in each bag is for use in the top of the Locking Rail.



Screw the Locking and Hinge Rails lightly to the wall at the lower fixing point, use the Spirit Level to ensure that each Rail is vertical. Mark where you need to drill the top fixing holes by passing the Marker through the holes at the top of the Rails (for the Locking Rail, the hole to mark is the lower of the 2 holes).





Move the Rails out of the way and drill the upper fixing holes appropriate to the type of wall that you are fixing your Gate to - refer to '**Before you start**' on **page 3**.

If you are fixing to a brick or concrete wall, insert the Wall Plugs (G) into each hole.

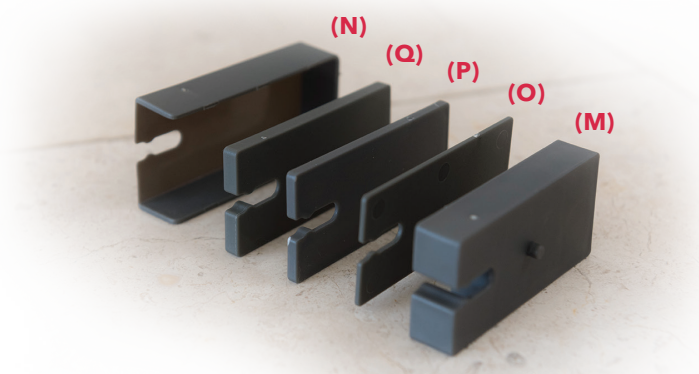
**13**

**If the Rail is vertical and without a skirting board, go straight to Step 14.** If the Rail is not vertical when tight against the wall, you will need to assemble an Upper Spacer Block (M-Q). The table below should guide you to the Spacers you're likely to need.

Slide the Inner Spacer (M) down behind the top of the Rail until the peg clicks into the hole and rests down onto the Screw. Slide the Small or Large Outer Spacer Cover (N1 or N2) down the back of the Rail over the Inner Spacer. Add Spacer Inserts (O-Q) between the Inner and Outer Spacers until the Rail is vertical when it is all pushed tight against the wall, using the Spirit Level to guide you.



Return the Rails to the vertical and screw lightly into position, choosing the correct Screws as in **Step 9**. Move the Spirit Level to stick to the front of the Rail.



Fitting inside an opening		Fitting outside an opening	
No skirting board	With skirting board or wall sloping towards opening	No skirting board	With skirting board or wall sloping towards opening
<b>Hinge &amp; Locking Rail</b> - No Spacers required on either	<b>Hinge &amp; Locking Rail</b> - Inner Spacer (M), Small Outer Spacer Cover (N1), plus appropriate Spacer Inserts (O-Q)	<b>Hinge Rail</b> - No Spacers required <b>Locking Rail</b> - Inner Spacer (M), Small Outer Spacer Cover (N1) & appropriate Spacer Inserts (O-Q)	<b>Hinge Rail</b> - Inner Spacer (M), Small Outer Spacer Cover (N1) plus appropriate Spacer Inserts (O-Q) <b>Locking Rail</b> - Inner Spacer (M), Large Outer Spacer Cover (N2) plus appropriate Spacer Inserts (O-Q)



If using a Spacer Block, check that the chosen Screws are the correct length (**Step 9**), then tighten the 2 Screws on each Rail. Reassemble the Top Lock, positioning the ring of the Magnet Lock so that it points directly towards the Hinge Rail. Replace the top cap and screw it all back together.



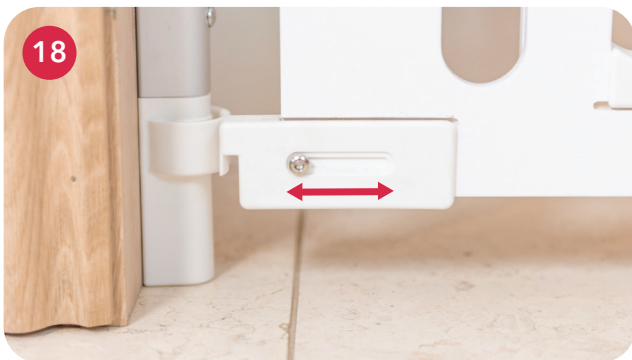
Line up the Gate Panel (R) so that the 2 locator pins line up and slide into the 2 hinges on the Hinge Rail. Pull up to check that they have clicked firmly into position.



Use both Allen Keys (S) to loosen (but not completely dismantle) the 4 clamps, until they can slip off the Gate Panels (the 2 wooden panels will separate, so don't drop the locking side as it comes away).



Lift the handle and drop the 2 locator pins on the locking side of the Gate Panel into the Locking Rail. The handle should lock down into place (as it locks, the window in the handle will change from red to green).



Use the Allen Keys to loosen, but not remove, the 4 corner bolts of the Gate Panels.



Slide the Gate Panels in or out so that it fits within the opening. Line up the gaps in the 2 wooden panels so that the clamps can be re-inserted - 2 as far right and 2 as far left as possible, and tighten firmly.





Slide the Gate left or right so that the Gate fits symmetrically and correctly within the opening before retightening the 4 corner bolts. The Gate is correctly adjusted when you cannot quite see the small red stripe when looking down onto the handle with the Gate locked.



Check that the Gate opens and closes smoothly. If it is difficult to open and close, make the Gate slightly narrower by adjusting the 4 corner bolts. If you can see the red line make it slightly wider.

## Using the Optional One-Way Stopper

**IMPORTANT:** If the Gate is located at the top of stairs, the one-way Stopper must be installed so that the Gate **cannot** open over the stairs.



Use the optional One-way Stopper if you want to open the Gate in one direction only. Use both Allen Keys to remove the bolt on the handle (keep the small Barrel Nut in a safe place, and reuse the screw in step 3).



Choose either the left or right One-Way Stopper (U1). Position it on the side of the Gate that **does** want to open. The small lip fits under the bottom of the handle and the curved end faces towards the Locking Rail.



Pass the Long Barrel Nut (U2) through the holes in the One-Way Stopper and the handle, and bolt securely together using the screw from step 1. If this Bolt attaches without passing through the Wooden Gate, use the second Long Barrel Nut (U2) and Screw (U3) to bolt the handle to the Gate. Check that the Gate remains correctly adjusted (**Steps 18-21**).



## To open and close the gate



To open the Gate, holding the handle, use your thumb to slide the locking catch on the top of the Gate Panel back towards the handle, and simultaneously lift the Gate to swing it open. The window in the handle will show red when the Gate is open.

**Important:** Your gate only opens through 110°. Pushing/forcing it to open further can damage the hinges such that the gate no longer provides an effective safety barrier.



To close the Gate, lift the handle and drop the locating pins onto the Locking Rail. The window in the handle will show green to indicate that the Gate is securely locked.

**Note:** The red line on the top, next to the locking catch, should **not** show when the Gate is locked. If it starts to show, readjust the width of the Gate (Steps 18-21).

## Temporary removal



Push the Removal Tool (T) up underneath the top hinge, and lift the Gate vertically.



To replace the Gate, simply drop the 2 locator pins of the Gate Panel back onto the Hinge Rail ensuring that it 'clicks' securely back into place.

## Permanent removal



Complete steps as for **temporary removal**. Undo the Screws on the Top Lock and remove the top cap and magnet lock.



Undo the 4 Screws attaching the Rails to the wall.

We can help you more at [www.fredsafety.co.uk](http://www.fredsafety.co.uk)

